



KABI SUKANTA MAHAVIDYALAYA

(Affiliated to the University of Burdwan)

ISO 9001:2015 Certified | Re-accredited by NAAC with 'B'

Bhadreswar, P.O – Angus, Hooghly – 712221, W.B.

Call: 033-2633-6184 | sukantacollege@gmail.com | www.ksmv.ac.in


Ref:.....

Date:.....

7.1.2 - The Institution has facilities for alternate sources of energy and energy conservation measures

1. Solar energy
2. Biogas plant
3. Wheeling to the Grid
4. Sensor-based energy conservation
5. Use of LED bulbs/ power efficient equipment

We have 1. Solar Energy and 5. Use of LED bulbs/ power efficient equipment



PRINCIPAL
KABI SUKANTA MAHAVIDYALAYA
P.O.-ANGUS. DIST.-HOOGHLY

Solar Energy

<https://www.ksmv.ac.in/7.1.2-21.aspx>

Use of LED bulbs/ power efficient equipment




PRINCIPAL
KABI SUKANTA MAHAVIDYALAYA
P.O.-ANGUS. DIST.-HOOGHLY



KABI SUKANTA MAHAVIDYALAYA

(Affiliated to the University of Burdwan)

ISO 9001:2015 Certified | Re-accredited by NAAC with 'B'

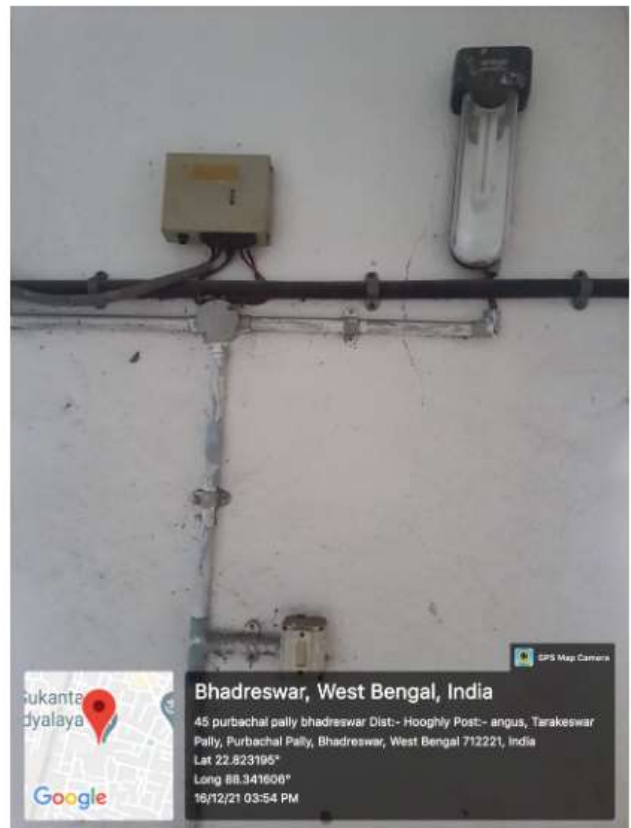
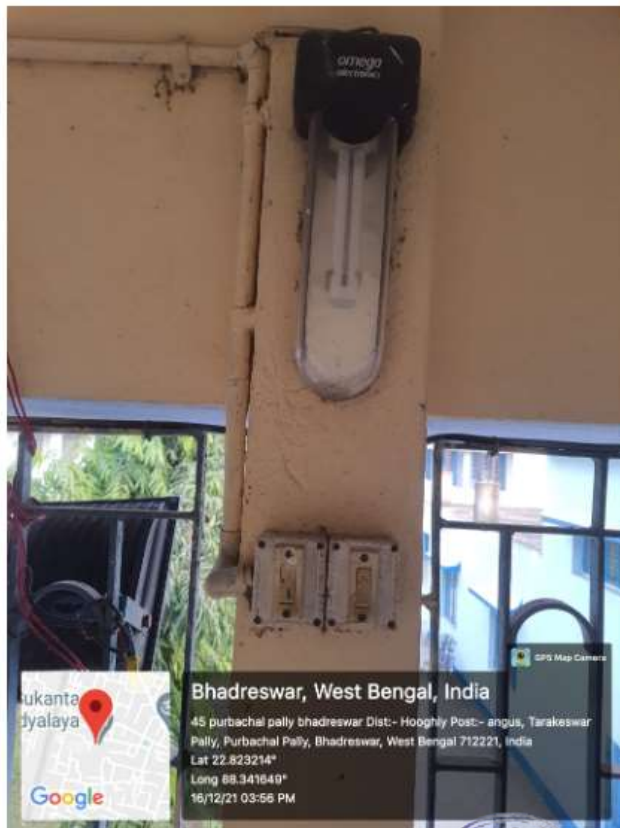
Bhadreswar, P.O – Angus, Hooghly – 712221, W.B.

Call: 033-2633-6184 | sukantacollege@gmail.com | www.ksmv.info

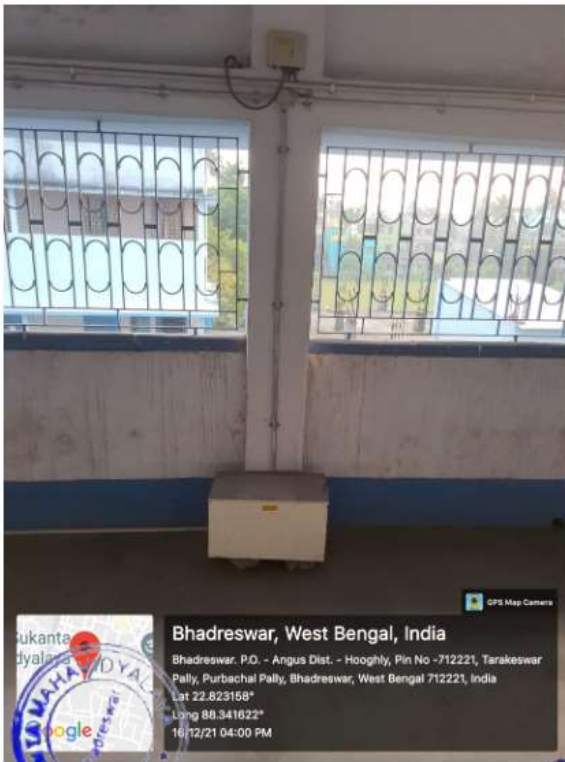
Ref:.....

Date:

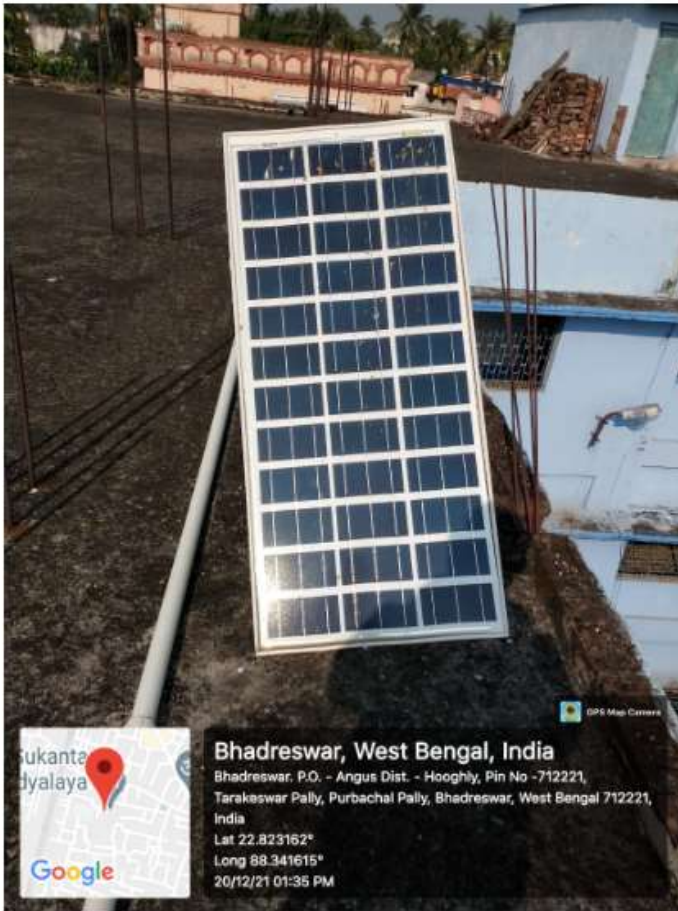
Solar Energy



Asim Das
PRINCIPAL
KABI SUKANTA MAHAVIDYALAYA
P.O.-ANGUS, DIST.-HOOGHLY



Aslam Hossain
PRINCIPAL
KABI SUKANTA MAHAVIDYALAYA
P.O.-ANGUS. DIST.-HOOGHLY



Asim Das Bora
PRINCIPAL
KABI SUKANTA MAHAVIDYALAYA
P.O.-ANGUS. DIST.-HOOGHLY

More Details : <https://ksmv.ac.in/7.1.2-21.aspx>